



## ART-10/15/20/ AC+EPS

### ADVANCED COUNTERBALANCED REACH TRUCK (AC SYSTEM) ( 1 TON / 1.5 TONS / 2.0 TONS)

- With EPS (Electronic Power Steering) system, very easy to drive.
- Mast reach electric stacker
- Advanced AC motor product
- Without carbon brush, easy maintenance
- Save electricity efficiently by 30%
- FRP body cover and battery cover
- Lead-free PU baked enamel painting
- Polyoxymethylene Steering Arm
- Mast draw back can reduce truck weight, reduce truck length and increase stability
- With a slow drive speed switch for duplex mast HI-LO (3M or above) and triple stage mast HI-LO (3.5M or above)
- No pollution, quiet, safty, durable and reliable
- Easy change battery by side move design.

#### Optional items:

-35°C cold storage version, foldable side protection guards, side shift,...etc. are available as options



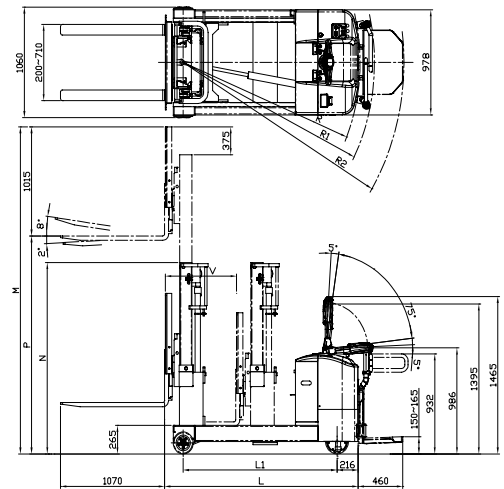
Mast at reaching condition  
It can carry any types of pallets.



Mast at draw back condition it can reduce truck weight, reduce truck length and increase stability.

## ★ ART-10/15/20 Specification ★

| Item                                    | ART-10          | ART-15                          | ART-20         |          |
|---|-----------------|---------------------------------|----------------|----------|
| <b>★Lifting</b>                         |                 |                                 |                |          |
| Rated capacity                          | 1000 kg         | 1500 kg                         | 2000 kg        |          |
| Load center                             | 500 mm          |                                 |                |          |
| Forks (T x W x L)                       | 40x100x1070 mm  |                                 | 45x100x1070 mm |          |
| Lifting speed                           | loaded          | 90 mm/s                         | 90 mm/s        | 80 mm/s  |
|   | empty           | 190 mm/s                        | 190 mm/s       | 190 mm/s |
| Lowering speed                          | loaded          | 180 mm/s                        | 180 mm/s       | 180 mm/s |
|   | empty           | 208 mm/s                        | 208 mm/s       | 208 mm/s |
| Travel speed                            | loaded          | 5 km/h                          | 4.5 km/h       | 4.5 km/h |
|   | empty           | 5.5 km/h                        | 5.5 km/h       | 5.5 km/h |
| Gradeability                            | loaded          | 8 %                             |                |          |
|   | empty           | 18 %                            |                |          |
| Fork tilting angle (F/R)                | 2° / 8°         |                                 |                |          |
| Weight of truck                         | with battery    | 1785 kg                         | 1865 kg        | 1945 kg  |
|   | without battery | 1570 kg                         | 1650 kg        | 1730 kg  |
| <b>★Wheels</b>                          |                 |                                 |                |          |
| Fork wheels                             | dimension       | Ø205x70 mm                      |                |          |
|   | quantity (R/L)  | 1/1                             |                |          |
|   | material        | PU                              |                |          |
| Drive wheel                             | dimension       | Ø235x120 mm                     |                |          |
|   | material        | PU (Rubber is optional )        |                |          |
| <b>★Battery &amp; Motors</b>            |                 |                                 |                |          |
| Battery capacity at 5 hours charge rate | 240AH / 24V     |                                 |                |          |
| Max. charging current(24 V)             | 40 A            |                                 |                |          |
| AC Drive motor power(24 V)              | 1.6 kw          |                                 |                |          |
| Steering motor power(24 V)              | 0.4 kw          |                                 |                |          |
| Lifting motor power(24 V)               | 3.5 kw          |                                 |                |          |
| Controller                              | AC Stepless     |                                 |                |          |
| <b>★Steering &amp; brake</b>            |                 |                                 |                |          |
| Steering System                         | Steering Arm    |                                 |                |          |
| Steering arc. total                     | 185 degree      |                                 |                |          |
| Traveling                               | Type            | Electromagnetic spring pressure |                |          |
|   | Actuated        | Drive wheel                     |                |          |
| Parking brake                           | Type            | Electromagnetic spring pressure |                |          |
|   | Actuated        | Drive wheel                     |                |          |
| Alarm Device                            | Standard        | Reverse buzzer                  |                |          |

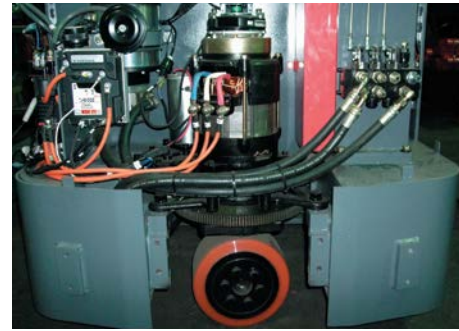


| Model                    | ART-10 | ART-15  | ART-20 |      |
|--------------------------|--------|---------|--------|------|
| Item                     | mm     | mm      | mm     |      |
| Truck length             | L      | 1640    | 1790   | 1990 |
| Truck width              |        | 978     |        |      |
| Wheel base               | L1     | 1230    | 1380   | 1580 |
| Total length with draw   |        | 2190    | 2280   | 2410 |
| Over all length extended |        | 2710    | 2860   | 3060 |
| Fork length              |        | 1070    |        |      |
| Turning Radius           | R      | 1468    | 1618   | 1818 |
| Turning Radius           | R1     | 1616    | 1766   | 1966 |
| Turning Radius           | R2     | 1920    | 2070   | 2270 |
| Mast reach length        |        | 500     | 650    | 750  |
| Fork wheel width         |        | 1060    |        |      |
| Fork adjustable width    |        | 200-710 |        |      |
| Height of straddle       |        | 265     |        |      |

| MAST TYPES                       | MAX. FORK HEIGHT (P) (mm) |      |       |      |      |      |      |      |      |      |      |      |      |      |      |
|----------------------------------|---------------------------|------|-------|------|------|------|------|------|------|------|------|------|------|------|------|
|                                  |                           | 2000 | *2500 | 3000 | 3500 | 4000 | 4500 | 5000 | 5500 | 6000 | 6350 | 6500 | 7000 | 7000 | 7500 |
| DUPLIX MAST TELESCOPIC           |                           |      |       |      |      |      |      |      |      |      |      |      |      |      |      |
| MIN. MAST HEIGHT                 | N                         | 1610 | 1860  | 2110 | 2360 | 2610 | 2860 | -    | -    | -    | -    | -    | -    | -    | -    |
| MAX. MAST HEIGHT                 | M                         | 3065 | 3565  | 4065 | 4565 | 5065 | 5565 | -    | -    | -    | -    | -    | -    | -    | -    |
| DUPLIX MAST HI-LO FULL FREE LIFT |                           |      |       |      |      |      |      |      |      |      |      |      |      |      |      |
| MIN. MAST HEIGHT                 | N                         | 1610 | 1860  | 2110 | 2360 | 2610 | 2860 | -    | -    | -    | -    | -    | -    | -    | -    |
| MAX. MAST HEIGHT                 | M                         | 3065 | 3565  | 4065 | 4565 | 5065 | 5565 | -    | -    | -    | -    | -    | -    | -    | -    |
| FREE LIFT                        |                           | 1000 | 1240  | 1490 | 1740 | 1998 | 2240 | -    | -    | -    | -    | -    | -    | -    | -    |
| TRIPLE STAGE MAST HI-LO          |                           |      |       |      |      |      |      |      |      |      |      |      |      |      |      |
| MIN. MAST HEIGHT                 | N                         | -    | -     | 1610 | 1860 | 1960 | 2110 | 2260 | 2460 | 2610 | 2730 | 2860 | 3060 | 3110 | 3210 |
| MAX. MAST HEIGHT                 | M                         | -    | -     | 4065 | 4565 | 5065 | 5565 | 6065 | 6565 | 7065 | 7415 | 7565 | 8065 | 8265 | 8565 |
| FREE LIFT                        |                           | -    | -     | 950  | 1000 | 1324 | 1490 | 1650 | 1820 | 2000 | 2120 | 2150 | 2320 | 2400 | 2500 |

· Lifting height over 6500mm, ART-20 length + 100mm ; width + 275mm

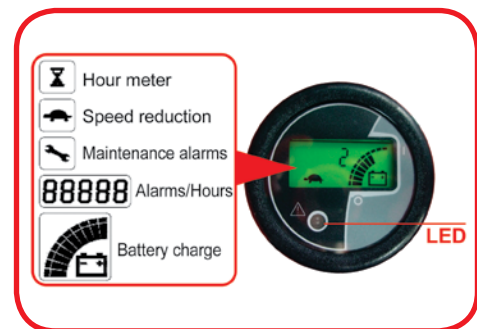
- AC Drive Motor
- With AC drive motor can save electricity efficiently by 30% and carbon brushless, easy maintenance. When Steering Arm is vertical or horizontal, the micro sensor is off and the spring electromagnetic pressure works to brake the truck.



- EPS Steering Arm (Electronic Power Steering)
- Steering Arm can work in 185 degree total arc for extra convenience. Easy-reach buttons for lifting and lowering and the horn are placed in the middle of the Steering Arm. For safety sake, the red colour safety device on top of steering handle, once the operator touches it, the truck will drive to forward direction.



- LED MDI-CAN multifunctional indicator has many internal functions:  
Indication of battery's state of charge.  
Operating hour meter.  
With CANBUS system, low battery protection alarm and shows all trouble coding for easy service use.



- Powerful Traction Battery
- Traction Battery used in the truck endures about 5 years and can be operated normally for 8 hours after 8 hours charge.
- Use Germany Hoesch brand section steel to make the high safety mast.
- With bright colored coating composed of a detailed surface treatment, anti-rust primer, and lead-free PU baked enamel painting. This superior painting process withstands harsh working environments assures a much longer life.



- With emergency stop switch for safety use.
- With grounding chain with PU drive wheel.

